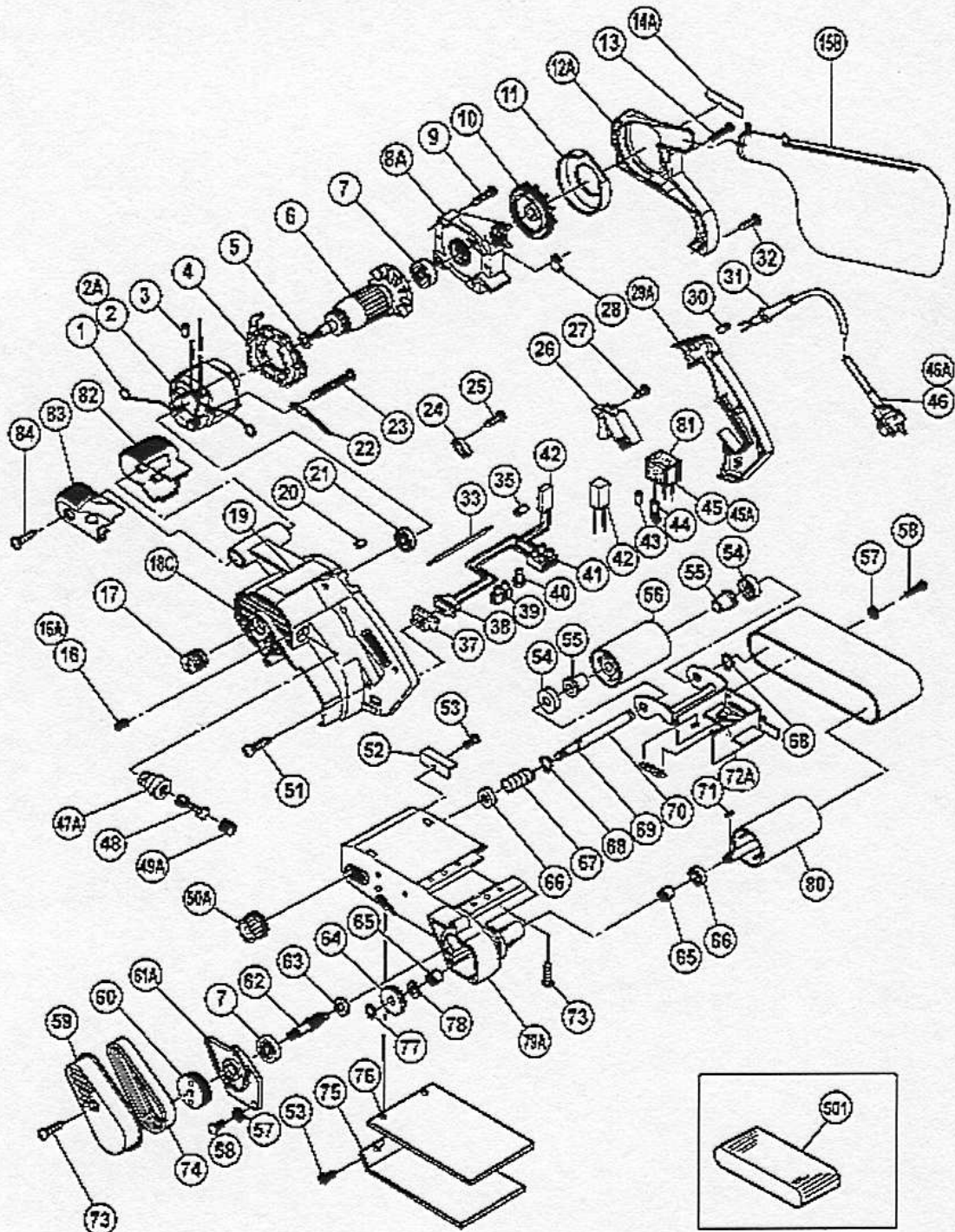


ELECTRIC TOOL PARTS LIST

■ BELT SANDER
Model SB 10T

2004 · 12 · 1
(E3-2)



PARTS

SB10T

ITEM No.	CODE No.	DESCRIPTION	No. USED	REMARKS
1	930-703	BRUSH TERMINAL	2	
* 2	340-104C	STATOR ASS'Y 110V-115V	1	INCLUD.1,3
* 2	340-104D	STATOR ASS'Y 120V-127V	1	INCLUD.1,3
2	340-104E	STATOR ASS'Y 220V-230V	1	INCLUD.1,3
2	340-104F	STATOR ASS'Y 240V	1	INCLUD.1,3
* 2	340-104K	STATOR ASS'Y 220V-230V	1	INCLUD.1 FOR SUI,NZL
* 2	953-142J	STATOR ASS'Y 220V-230V	1	INCLUD.1 FOR FIN
* 2	953-142H	STATOR ASS'Y 240V	1	INCLUD.1 FOR GBR
* 2	953-142K	STATOR ASS'Y 110V	1	INCLUD.1 FOR GBR
* 2A	340-104L	STATOR ASS'Y 220V-230V	1	INCLUD.1 FOR ITA,FRG,FRA,HOL,DEN,POR,
2A	340-104L	STATOR ASS'Y 220V-230V	0	ESP,SWE,AUT,SAF,NOR
* 2A	340-104P	STATOR ASS'Y 240V	1	INCLUD.1,3 FOR AUS
3	981-373	TUBE (D)	1	
4	953-185	FAN GUIDE	1	
5	954-234	BEARING WASHER (B)	1	
* 6	953-145U	ARMATURE ASS'Y 110V-115V	1	INCLUD.5,7,21
* 6	953-145D	ARMATURE 120V-127V	1	
* 6	953-145E	ARMATURE 220V-230V	1	
* 6	953-145F	ARMATURE 230V-240V	1	FOR KUW,NGU,AUS,GBR,ITA,FRG,HOL,DEN,SWE,
6	953-145F	ARMATURE 230V-240V	0	AUT,NOR,ESP
7	620-0VV	BALL BEARING 6200VVCMP2L	2	
8A	322-590	INNER COVER	1	
9	986-011	TAPPING SCREW (W/SP. WASHER) D5X30	4	
10	953-053	DUST FAN	1	
11	953-156	DUST GUIDE	1	
12A	322-589	DUST COVER	1	
13	949-223	MACHINE SCREW M4X25 (10 PCS.)	2	
14A		HITACHI LABEL (B)	1	
15B	322-592	DUST BAG (GRAY)	1	
16	932-668	HEX. SOCKET SET SCREW M4X10	2	TILL 6.1988
16A	938-477	HEX. SOCKET SET SCREW M5X8	2	SINCE 7.1988
17	987-532	PULLEY (A)	1	
18C	323-590	HOUSING ASS'Y	1	INCLUD.16A,47A
19		NAME PLATE	1	
20	931-701	BEARING LOCK	1	
21	629-VVM	BALL BEARING 629VVC2PS2L	1	
* 22	953-033	INTERNAL WIRE	1	FOR SUI
* 22	961-421Z	INTERNAL WIRE	1	FOR FIN
23	953-174	HEX. HD. TAPPING SCREW D5X55	2	

*:ALTERNATIVE PARTS

PARTS

SB10T

ITEM No.	CODE No.	DESCRIPTION	No. USED	REMARKS
24	937-631	CORD CLIP	1	
25	984-750	TAPPING SCREW (W/FLANGE) D4X16	2	
* 26	931-573	SWITCH (2P PILLAR TYPE) W/LOCK	1	
* 26	953-178	SWITCH (2P PILLAR TYPE) W/SAFETY LOCK	1	FOR FRA
27	954-017	TAPPING SCREW D4X12	1	
28	953-169	PLATE	1	
29A	953-186	HANDLE COVER	1	
* 30	981-373	TUBE (D)	2	FOR CORD
* 31	958-049	CORD ARMOR D8.2	1	
* 31	940-778	CORD ARMOR D10.7	1	
32	958-705	TAPPING SCREW D4X25	1	
33		INTERNAL WIRE	1	
35	981-373	TUBE (D)	1	
37	971-792	SLIDE SWITCH COVER	1	
* 38	953-171	SLIDE SWITCH (1P SOLDER TYPE)	1	
* 38	995-582	SLIDE SWITCH (1P SOLDER TYPE)	1	FOR USA
* 39	938-307	PILLAR TERMINAL	1	FOR FIN
40	959-140	CONNECTOR 50091 (10 PCS.)	2	
* 41	958-308Z	PILLAR TERMINAL (A)	1	FOR USA
* 42	956-613	DIODE 100V-127V	1	
* 42	956-614	DIODE 200V-240V	1	
* 42	953-250P	DIODE 115V	1	FOR CAN,USA
* 42		CONTROLLER CIRCUIT 240V	1	
042	000-008D		0	FOR AUS
* 43	981-373	TUBE (D)	2	FOR NOISE SUPPRESSOR
* 44	938-108	TERMINAL	1	FOR NOISE SUPPRESSOR
* 44	983-504	TERMINAL	1	FOR NOISE SUPPRESSOR FOR AUS
* 45	960-283Z	NOISE SUPPRESSOR	1	FOR SUI
* 45A	994-273	NOISE SUPPRESSOR	1	
* 46	500-201Z	CORD	1	(CORD ARMOR D10.7)
* 46	500-439Z	CORD	1	(CORD ARMOR D8.2) FOR NGU,NZL,AUS
* 46	500-231Z	CORD	1	(CORD ARMOR D8.2) FOR SAF
* 46	500-234Z	CORD	1	(CORD ARMOR D8.2) FOR ITA,FRG,FRA,HOL,
046	500-234Z	CORD	0	DEN,AUT,INA,SUR
* 46	500-237Z	CORD	1	(CORD ARMOR D8.2) FOR GBR (110V)
* 46	500-240Z	CORD	1	(CORD ARMOR D8.2) FOR USA,CAN
* 46	500-247Z	CORD	1	(CORD ARMOR D10.7) FOR FIN,SWE,NOR
* 46	500-248Z	CORD	1	(CORD ARMOR D10.7) FOR SUI
* 46A	500-423Z	CORD	1	(CORD ARMOR D8.2) FOR SIN,KUW

*:ALTERNATIVE PARTS

PARTS

SB10T

ITEM No.	CODE No.	DESCRIPTION	No. USED	REMARKS
* 46A	500-435Z	CORD	1	(CORD ARMOR D8.2) FOR GBR (240V)
* 46A	500-447Z	CORD	1	(CORD ARMOR D8.2) FOR SYR
47A	958-900	BRUSH HOLDER	2	
48	999-043	CARBON BRUSH (1 PAIR)	2	
49A	945-161	BRUSH CAP	2	
50A	995-578	KNOB NUT	1	
51	956-636	TAPPING SCREW (W/WASHER) D4X25	3	
52	953-158	STRIKING GUIDE	1	
53	949-216	MACHINE SCREW M4X10 (10 PCS.)	3	
54	953-043	WASHER	2	
55	953-042	METAL	2	
56	995-586	IDLE PULLEY ASS'Y	1	INCLUD.55
57	949-453	SPRING WASHER M4 (10 PCS.)	5	
58	949-218	MACHINE SCREW M4X14 (10 PCS.)	5	
59	953-155	BELT COVER	1	
60	953-154	PULLEY (B)	1	
61A	322-591	GEAR COVER	1	
62	953-152	PINION	1	
63	935-522	METAL	1	
64	995-576	GEAR	1	
65	953-175	METAL D10X14X12	2	
66	953-161	WASHER	2	
67	995-577	SPRING	1	
68	939-542	RETAINING RING FOR D12 SHAFT (10 PCS.)	2	
69	995-587	SHAFT	1	
70	953-063	SPRING	1	
71	944-109	FEATHER KEY 3X3X8	1	
72A	995-585	FORK ASS'Y	1	INCLUD.70
73	954-004	TAPPING SCREW D4X16	5	
74	958-874	BELT	1	
75	995-580	SHOE PLATE	1	
76	995-579	SHOE CUSHION	1	
77	939-540	RETAINING RING FOR D10 SHAFT (10 PCS.)	1	
78	948-213	WASHER (B) D19	1	
79A	323-592	BODY ASS'Y	1	INCLUD.63,65
80	995-575	DRIVE PULLEY	1	
* 81	930-153	SUPPORT (B)	1	FOR NOISE SUPPRESSOR FOR AUS
82	322-596	SUB GRIP (A)	1	
83	322-597	SUB GRIP (B)	1	

*:ALTERNATIVE PARTS

PARTS

SB10T

ITEM No.	CODE No.	DESCRIPTION	No. USED	REMARKS
84	301-653	TAPPING SCREW (W/FLANGE) D4X20 (BLACK)	2	

STANDARD ACCESSORIES

ITEM No.	CODE No.	DESCRIPTION	No. USED	REMARKS
501	995-552	SANDING BELTS 100X610 WA80 (10 PCS.)	1	
601	995-574	SANDING FRAME ASS'Y	1	INCLUD.602-606
602	995-583	ADJUSTING BOLT	1	
603	993-843	KNOB BOLT M6X14	1	
604	951-039	MACHINE SCREW (W/SP. WASHER) M4X12	2	
605	995-588	BOTTOM PLATE (A)	2	
606	995-589	BOTTOM PLATE (B)	4	
607	995-550	SANDING BELTS 100X610 WA40 (10 PCS.)	1	
608	995-551	SANDING BELTS 100X610 WA60 (10 PCS.)	1	
609	995-553	SANDING BELTS 100X610 WA100 (10 PCS.)	1	
610	995-554	SANDING BELTS 100X610 WA120 (10 PCS.)	1	
611	995-555	SANDING BELTS 100X610 WA150 (10 PCS.)	1	
612	995-556	SANDING BELTS 100X610 WA180 (10 PCS.)	1	
613	995-557	SANDING BELTS 100X610 WA240 (10 PCS.)	1	
614	995-558	SANDING BELTS 100X610 AA40 (10 PCS.)	1	
615	995-559	SANDING BELTS 100X610 AA60 (10 PCS.)	1	
616	995-560	SANDING BELTS 100X610 AA80 (10 PCS.)	1	
617	995-561	SANDING BELTS 100X610 AA100 (10 PCS.)	1	
618	995-562	SANDING BELTS 100X610 AA120 (10 PCS.)	1	
619	995-563	SANDING BELTS 100X610 AA150 (10 PCS.)	1	
620	995-564	SANDING BELTS 100X610 AA180 (10 PCS.)	1	
621	995-565	SANDING BELTS 100X610 AA240 (10 PCS.)	1	
622	995-566	SANDING BELTS 100X610 CC40 (10 PCS.)	1	
623	995-567	SANDING BELTS 100X610 CC60 (10 PCS.)	1	
624	995-568	SANDING BELTS 100X610 CC80 (10 PCS.)	1	
625	995-569	SANDING BELTS 100X610 CC100 (10 PCS.)	1	
626	995-570	SANDING BELTS 100X610 CC120 (10 PCS.)	1	
627	995-571	SANDING BELTS 100X610 CC150 (10 PCS.)	1	
628	995-572	SANDING BELTS 100X610 CC180 (10 PCS.)	1	
629	995-573	SANDING BELTS 100X610 CC240 (10 PCS.)	1	